

# Techsense Bangladesh Ltd

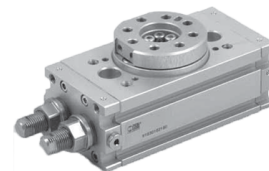
## Rotary Actuators Series R3, Code- W1630303180

Actuator with double rack and play take-up. Angle of rotation adjustable from 0 to 180°. The R3 rotary actuator can come with a mechanical stop or hydraulic end-of-stroke cushioning. There is a version with flange and one with shaft (for  $\varnothing 16-20-25-30$ ). There are slots in the body for retracting magnetic proximity sensors, two on each side. There is hole in the flange for air pipes or wires.

| TECHNICAL DATA                                       |         | R3-16   | R3-20  | R3-22  | R3-25  | R3-30  | R3-40  |
|--|---------|---|--------|--------|--------|--------|--------|
| Operating pressure                                   | bar     | 3 to 7  |        |        |        |        |        |
|  | MPa     | 0.3 to 0.7  |        |        |        |        |        |
|  | psi     | 43.5 to 101   |        |        |        |        |        |
| Temperature range                                    | °C      | -10 to +80  |        |        |        |        |        |
| Angle adjustment                                     | degrees | 0° to 180°  |        |        |        |        |        |
| Fluid  |         | 20 $\mu$ m filtered, lubricated or unlubricated air; lubrication if used, it must be continuous |        |        |        |        |        |
| Versions   |         | With mechanical stop / hydraulic decelerator  |        |        |        |        |        |
| Sizes  |         | 16  | 20     | 22     | 25     | 30     | 40     |
| Bores  | mm      | 2 x 16  | 2 x 20 | 2 x 22 | 2 x 25 | 2 x 30 | 2 x 40 |
| Theoretical torque at 6 bar                          | Nm      | 0.9   | 1.8    | 2.7    | 4.6    | 9.3    | 22     |
| Max. axial load                                      | N       | 74  | 135    | 195    | 300    | 340    | 360    |
| Max. radial load                                     | N       | 78  | 137    | 360    | 450    | 490    | 560    |
| Weight   | kg      | 0.53  | 0.99   | 1.29   | 2.08   | 3.9    | 6.7    |
| Rotation time without load                           | s       | 0.2   | 0.2    | 0.2    | 0.2    | 0.3    | 0.3    |
| Admissible kinetic energy                            | Joule   |   |        |        |        |        |        |
| WITH MECHANICAL STOP                                 |         | 0.007   | 0.025  | 0.049  | 0.082  | 0.090  | 0.150  |
| (with flange W1630__2180 and with shaft W1630__5180) |         |   |        |        |        |        |        |
| WITH HYDRAULIC DECELERATOR                           |         | -   | -      | -      | 0.29   | 1.10   | 1.60   |
| (with flange W1630__2180 and with shaft W1630__5180) |         |   |        |        |        |        |        |

### General Attributes

- Type : with flange + shock absorbers R3-180
- Diameter (Bore) : 30 mm

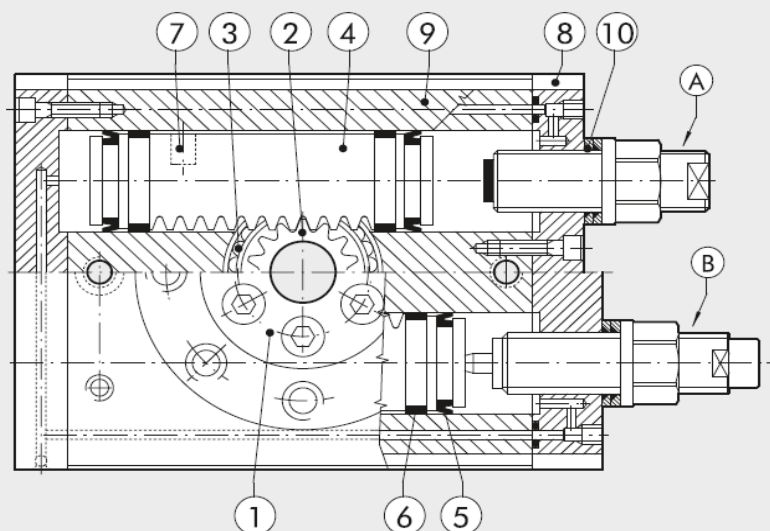


### COMPONENTS

- ① ROTARY FLANGE: anodised aluminium
- ② PINION: hardened and tempered steel
- ③ BALL BEARING
- ④ PISTON / RACK: hardened and tempered steel
- ⑤ CUSHIONING GASKET: NBR
- ⑥ GUIDE SHOE: PTFE
- ⑦ MAGNET: neodymium
- ⑧ HEAD: anodised aluminium
- ⑨ BARREL: anodised aluminium
- ⑩ SEAL: NBR

### VERSIONS:

- A Stroke adjustment
- B Stroke adjustment with inside hydraulic shock absorbers (available from  $\varnothing 25$ )



For further information please visit : <https://goo.gl/wfoWWW>



We are the authorized distributor of Metal Work in Bangladesh.

