

Techsense Bangladesh Ltd

Gripper With Two Parallel Jaws Series P2, Code- W1580300200

These are grippers with 2 parallel long-stroke jaws. The mechanical design makes them suitable for clamping bulky parts. All grippers, except for the smallest ones, can mount a retracting magnetic proximity sensor.

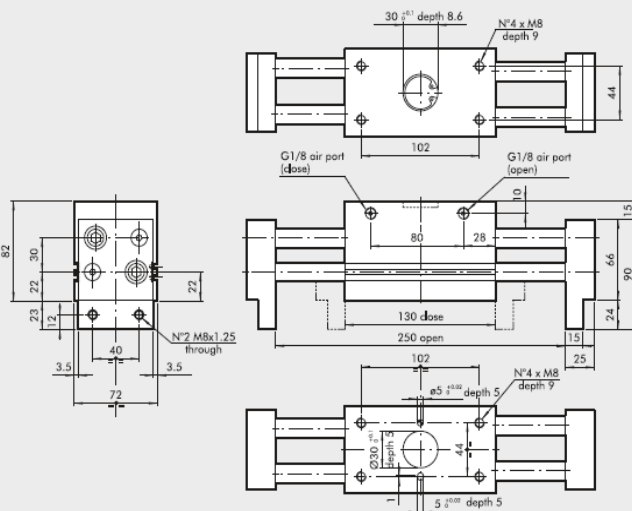
TECHNICAL DATA		P4-10	P4-12	P4-16	P4-25	P4-30
Operating pressure	bar			3 to 7		
	MPa			0.3 to 0.7		
	psi			43 to 101		
Operating temperature	°C			-10 to +80		
	cycles/s			1		
Fluid		20 µm filtered, lubricated or unlubricated air; lubrication if used, it must be continuous				
Bore	mm	2 x 10	2 x 12	2 x 16	2 x 30	2 x 30
Single jaw stroke	mm	5	10	15	30	60
Clamping force at 6.3 bar 20 mm from the top surface during opening and closing		N	30	45	75	280
Weight	kg	0.18	0.3	0.5	2.95	3.7

General Attributes

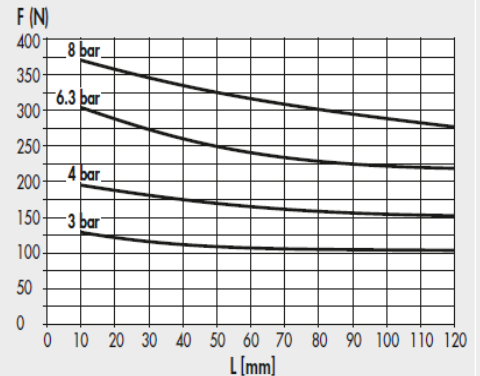
- Type : P4-30 long stroke
- Diameter (Bore) : 2x30
- Stroke : 60 mm
- Weight : 3.7 kg



DIMENSIONS OF GRIPPER P4-30



Code	Description
W1580300200	Gripper with 2 long-stroke jaws P4-30



For further information please visit : <https://goo.gl/wfoWWW>

We are the authorized distributor of Metal Work in Bangladesh.

